

# FileMaker 14

## Specific Features



FileMaker Pro



FileMaker Pro Advanced



FileMaker Server

## FileMaker Pro and FileMaker Pro Advanced Specific Features for the Middle East and India

FileMaker Pro 14 and FileMaker Pro 14 Advanced is an enhanced version of the #1-selling easy-to-use database software, adapted for the Middle East and India.

Use this guide to explore and understand the specific features of FileMaker for the Middle East and India:

### Contents

2	Support of Middle Eastern and Indian languages Paragraph direction Character Direction Digits
7	Spelling Option
7	Layout of Middle Eastern Content Controls Mirror Layout
13	Sorting - Search/Find
16	FileMaker WebDirect
18	Diacritics and Ligatures

## Support of Middle Eastern and Indian languages

FileMaker Pro and FileMaker Pro Advanced provide enhanced support of Arabic & Hebrew as well as Indic languages for Windows and Macintosh.

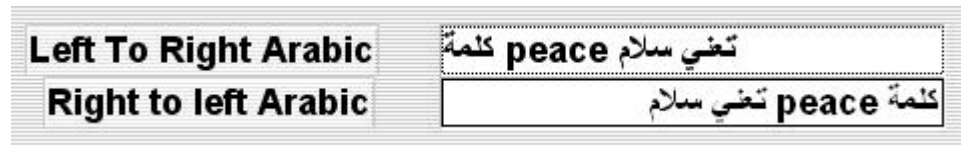
FileMaker Pro and FileMaker Pro Advanced come with enhanced options for entering and displaying Middle Eastern and Indian texts and special settings for laying out these languages.

The paragraph and character directions are key elements for laying out Arabic or Hebrew texts.

### Paragraph direction

It is important to understand and differentiate between the paragraph direction function and the paragraph alignment function. Paragraph direction controls the order of multidirectional text inside the paragraph. Paragraph alignment controls the placement of the whole line according to the left and right boundaries.

Paragraph direction and alignment are independent. If your text is mainly Arabic or Hebrew, use a “Right to Left” paragraph direction, otherwise, use the “Left to Right” option.



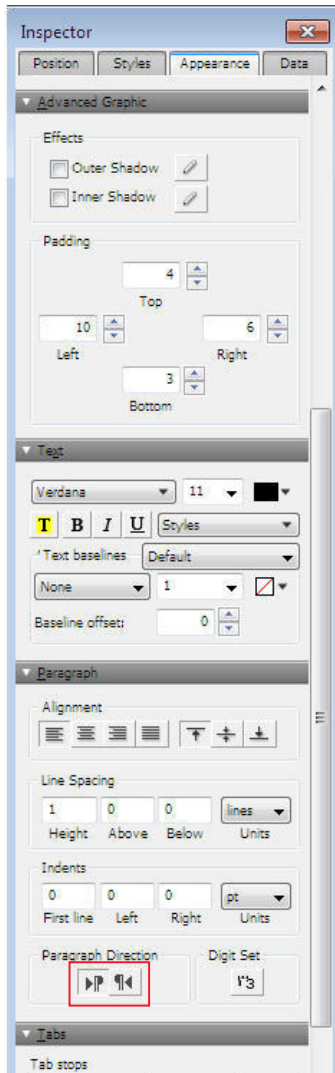
You can access this option via:

- The Formatting tool bar (available via the menu View>Formatting Bar)
- The Inspector>Appearance panel (available via the menu View>Inspector)
- The menu Format>Paragraph Direction
- The menu Format>Line Spacing>Other...

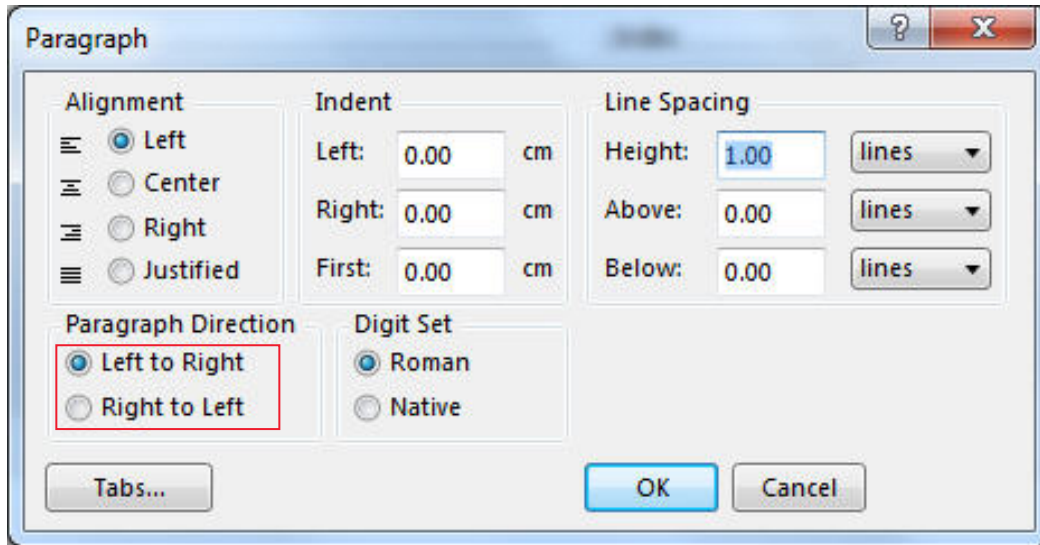
## Formatting tool bar



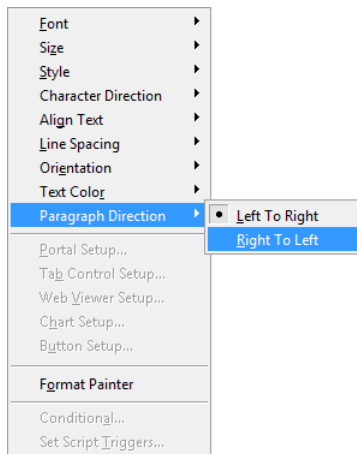
## Appearance panel



Menu Format>Line Spacing>Other...



### Format Menu



## Character Direction

FileMaker automatically calculates the default character direction according to the language/script of the character, the paragraph direction as well as the surrounding characters.

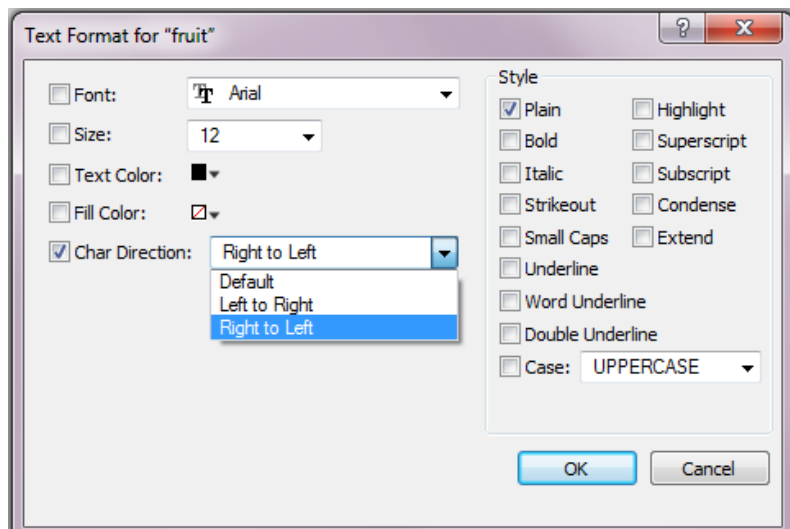
In a few cases, some characters may not be displayed in the right position. In order to force the direction of the misplaced character, use the right-to-left or left-to-right character direction option in the Text Format dialog box.

- A right-to-left character belongs to a language/script which is read right-to-left (example: Arabic, Hebrew, Persian).
- A left-to-right character belongs to a language/script which is read from left-to-right (example English, French).

You can access this option via:

- The Inspector>Appearance panel (available via the menu View>Inspector), see page 2
- The menu Format>Conditional
- By right-clicking on a field

From the “Conditional Formatting” dialog, click “Add” to define a new condition. Click on button “More Formatting”.



## Digits

FileMaker Pro and FileMaker Pro Advanced allow you to use different digits: roman and native.

For example:



You can access this option via:

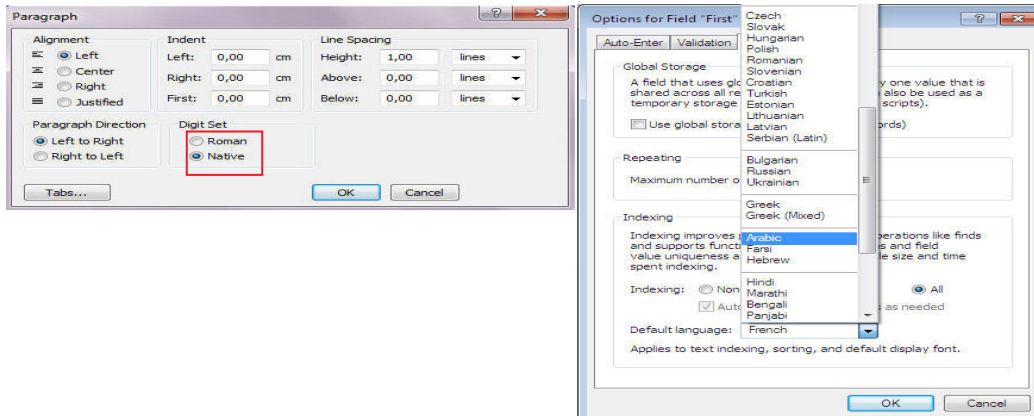
- The Text Formatting toolbar (available from menu View>Formatting bar)



- The Inspector>Appearance panel (available via the menu View>Inspector), see page 3
- The menu Format>Line Spacing>Other...

## Menu Format>Line Spacing>Other...

Also the default language option of the field should be coherent to the selected Digit Set option.  
(File > Manage > Database then select your field and choose Options button)



## Spelling Option

FileMaker Pro and FileMaker Pro Advanced also include the support of the “cocoAspell” tool (Mac OS X interface for Aspell) from Mac OS 10.4 for Arabic, Hebrew, Thai, Farsi, Vietnamese, Czech, Slovak, Hungarian, Polish, Romanian, Slovenian, Croatian, Turkish, Estonian, Lithuanian, Latvian, Serbian, Bulgarian, Ukrainian, Greek, Russian.

To use cocoAspell:

- Install cocoAspell using its installer
- Download the language pack (<ftp://ftp.gnu.org/gnu/aspell/dict>) from the FTP site.
- Once the archive is decompressed, copy the files into /Library/Application Support/CocoaSpell.
- The last step is to launch the preference panel (using System Preferences) and in preference “Spelling” you choose which language you want to activate and which to deactivate.
- Restart FileMaker to see the activated languages.

## Layout of Middle Eastern Content

FileMaker Pro and FileMaker Pro Advanced come with special settings for laying out right-to-left content.

### Controls

Each control can have right-to-left attributes such as alignment and direction.

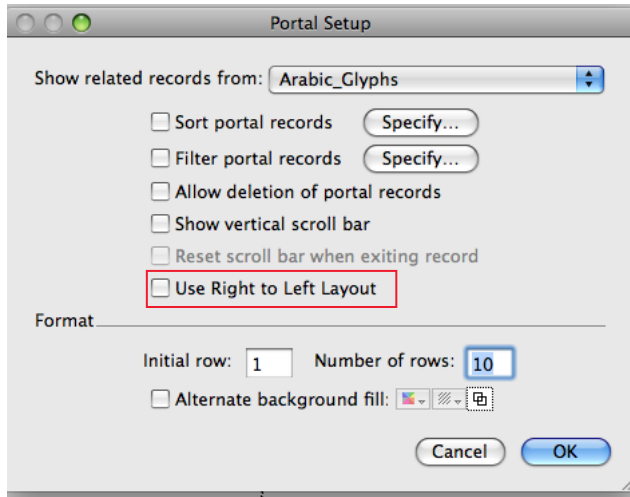
- Dropdown list
- Dropdown calendar
- Edit box
- Popup menu
- Check box
- Radio button



## Portal setup

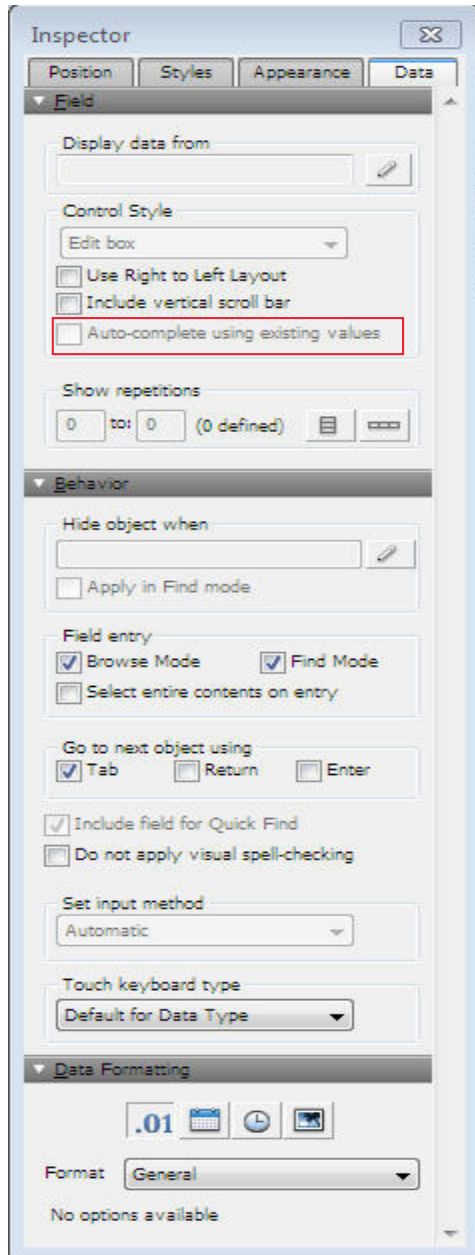
You can access this option via:

- The menu Insert>Portal
- The Inspector>Data panel (available via the menu View>Inspector)



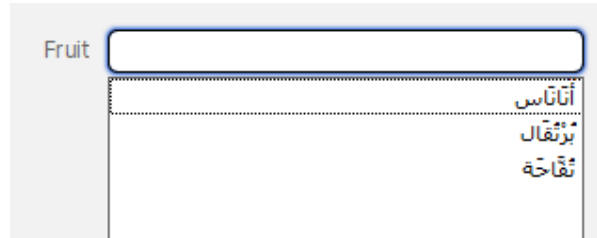
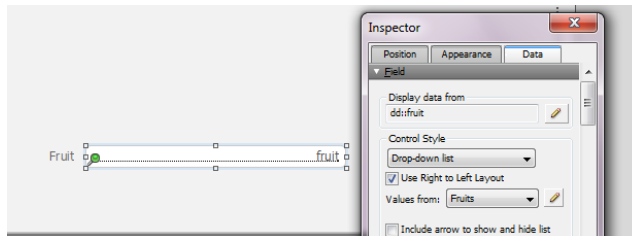
Example of Portal:

## Data panel

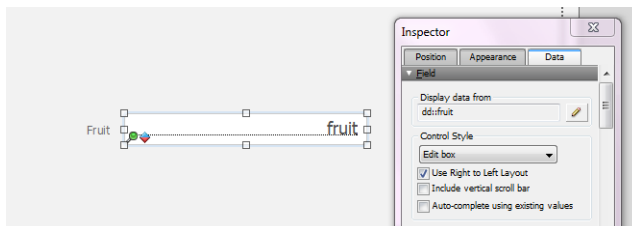


## FileMaker 14 Specific features

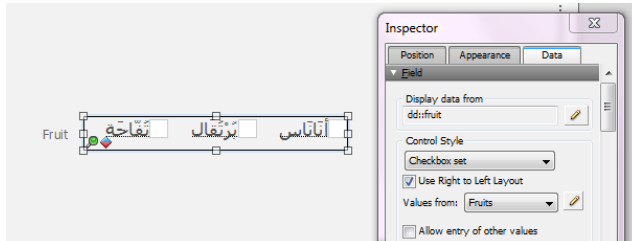
### Dropdown list



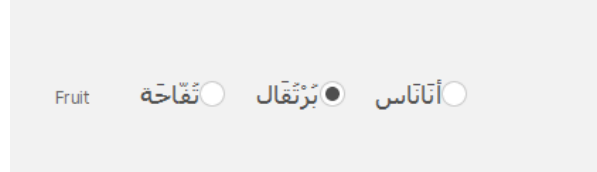
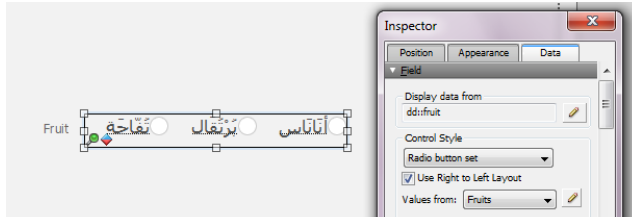
### Edit Box



### Check Box



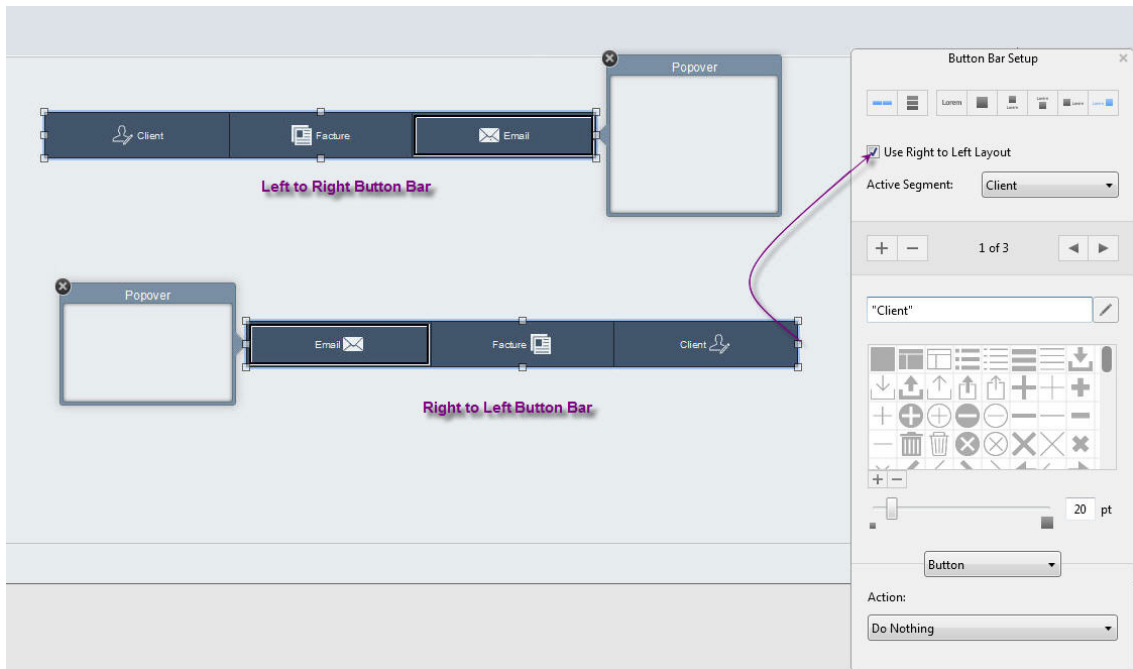
### Radio Buttons



## Button Bar

FileMaker Pro and FileMaker Pro Advanced come with a new feature that offers you a right to left behavior for the button bar.

You can access this option from the 'Button Bar Setup' panel by double clicking on the button bar.

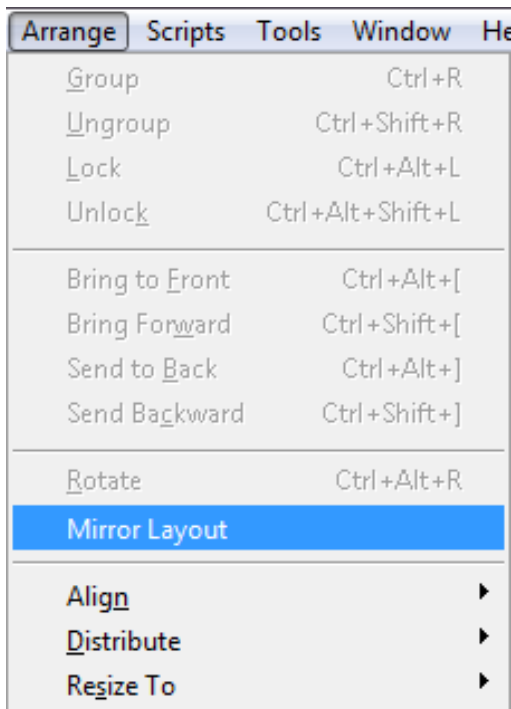


## Mirror Layout

FileMaker Pro and FileMaker Pro Advanced come with a new feature that offers you a mirror image of your layout. This feature converts your layout from left-to-right to right-to-left.

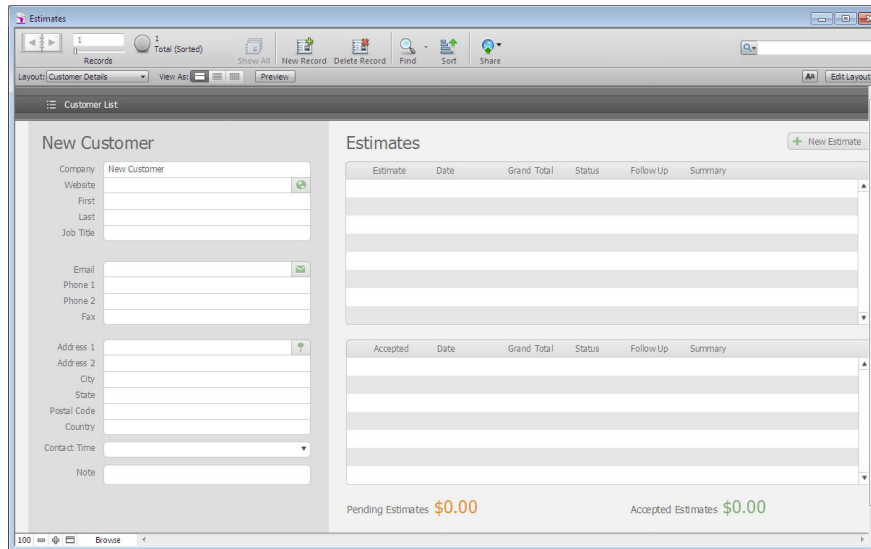
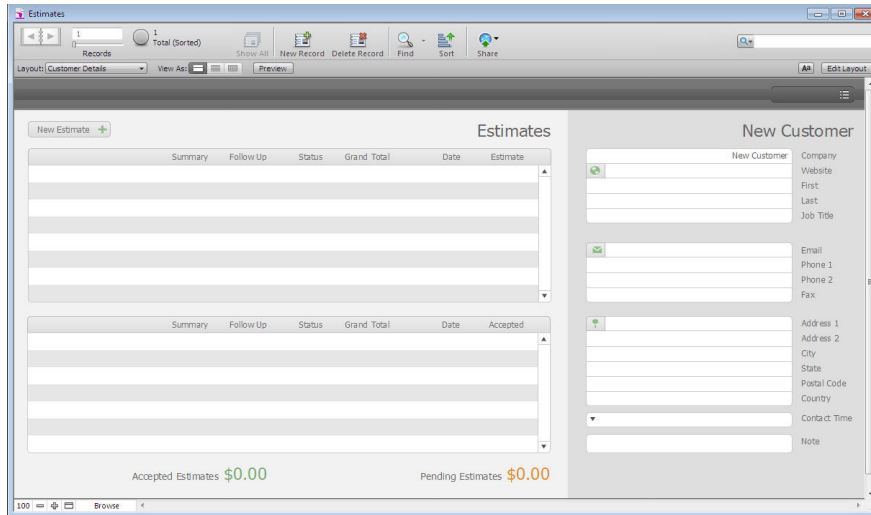
You can access this option via:

- The menu Arrange -> Mirror Layout
- The contextual menu Arrange -> Mirror Layout



## FileMaker 14 Specific features

Find an example of this feature in the template below: before and after applying the Mirror Layout.



## Sorting - Search/Find

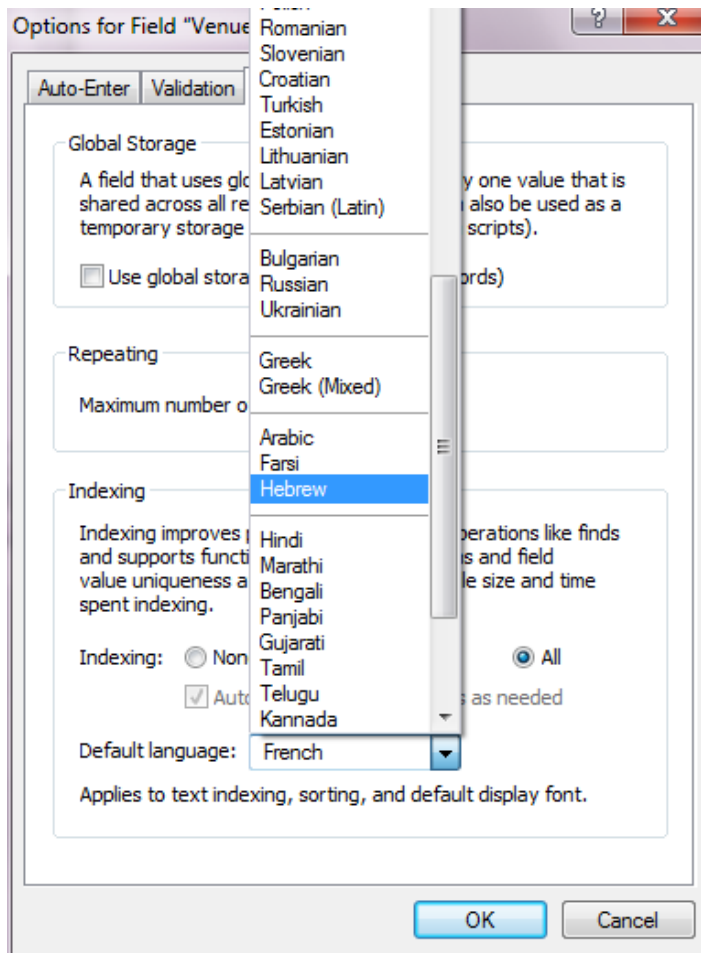
FileMaker Pro and FileMaker Pro Advanced come with extra languages for the sorting and search/find attributes which allow you to sort, search and find Middle Eastern and Indian text.

Find the list of available languages in FileMaker Pro and FileMaker Pro Advanced below:

- For the Middle East : Arabic, Hebrew and other languages such as Farsi  
Note: for better results, search your data without diacritics.
  
- For India : Hindi, Marathi, Bengali, Panjabi, Gujarati, Tamil, Telugu, Kannada and Malayalam
  
- For Asia : Thai, Vietnamese

## FileMaker 14 Specific features

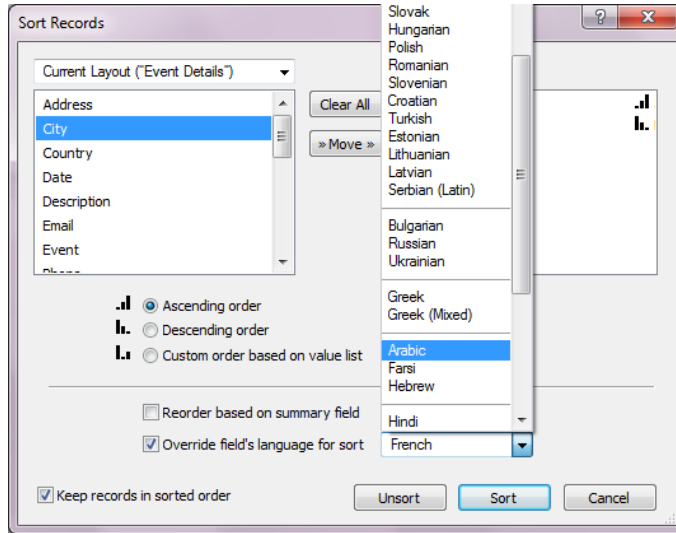
To define the default sort language for indexing and sorting text, you simply open the “Options for Field” box and click the appropriate options:





## FileMaker 14 Specific features

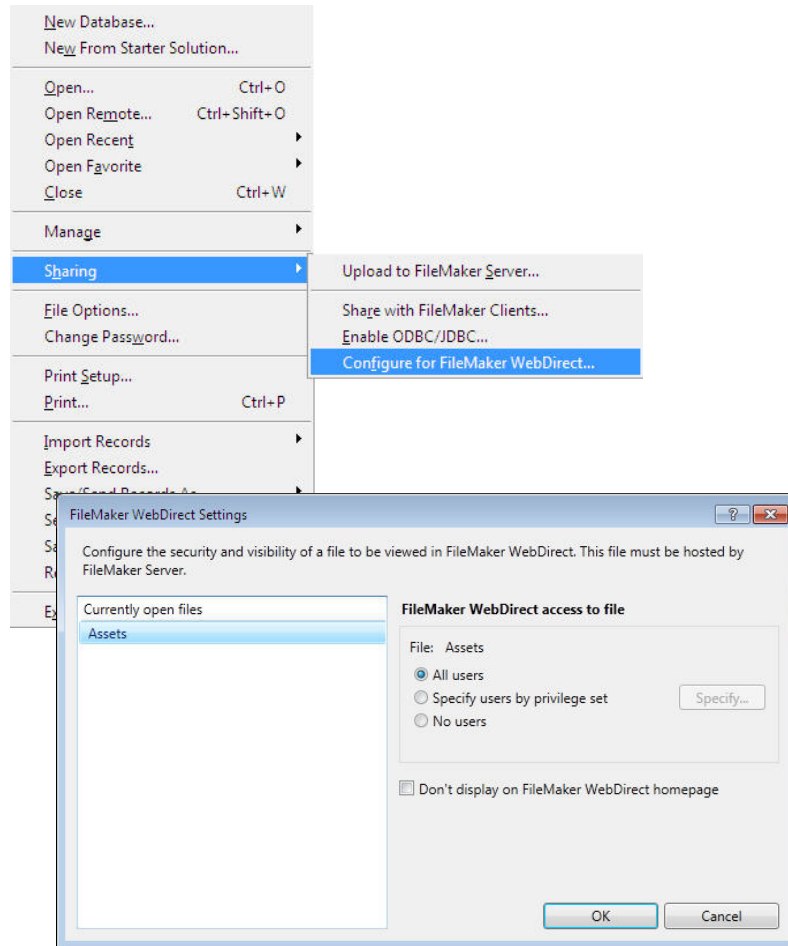
You can also select another language each time you sort data:



## FileMaker WebDirect

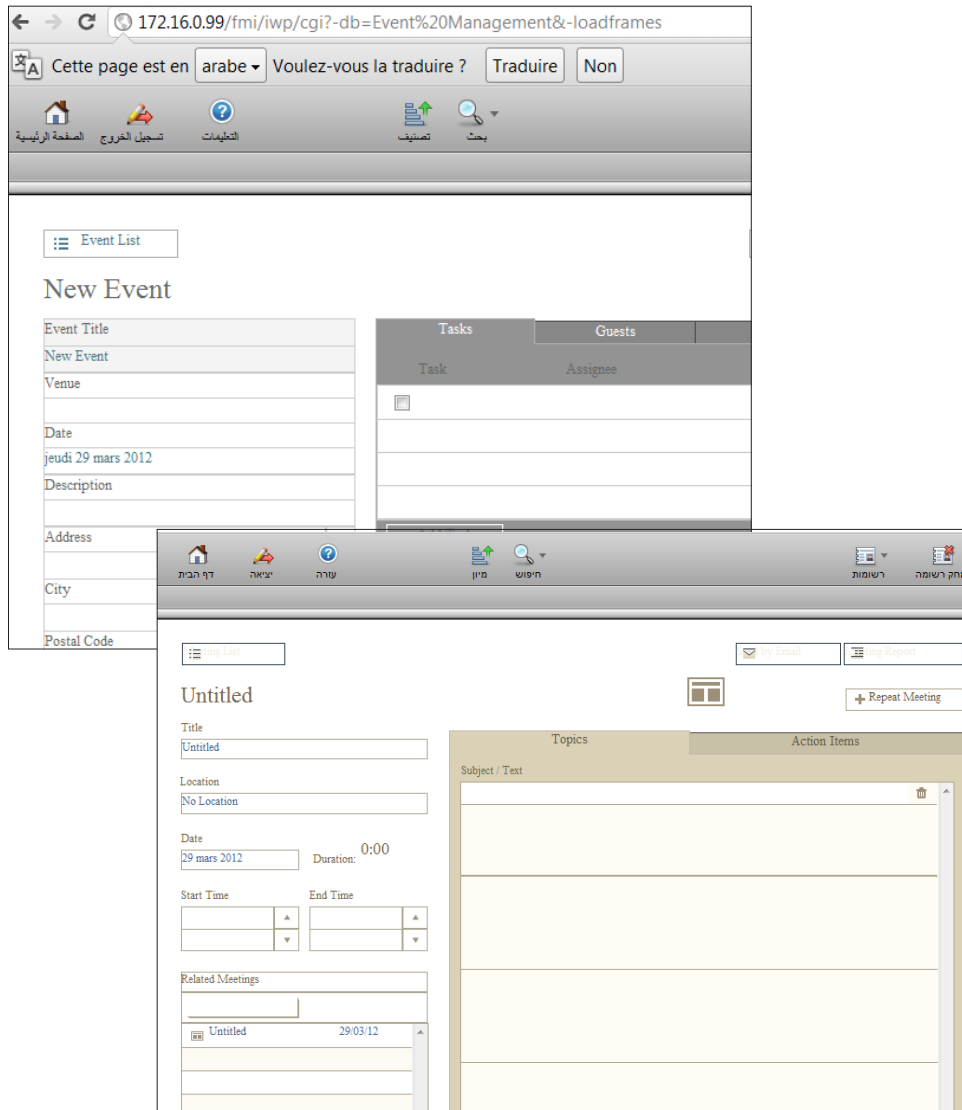
FileMaker Pro et FileMaker Pro Advanced come with special settings for publishing databases on the web.

You can share your database with users in a web browser, allowing them to find, browse, and modify data with an English, Arabic, Hebrew interface as well as some other languages.



## FileMaker 14 Specific features

FileMaker templates seen in a web browser

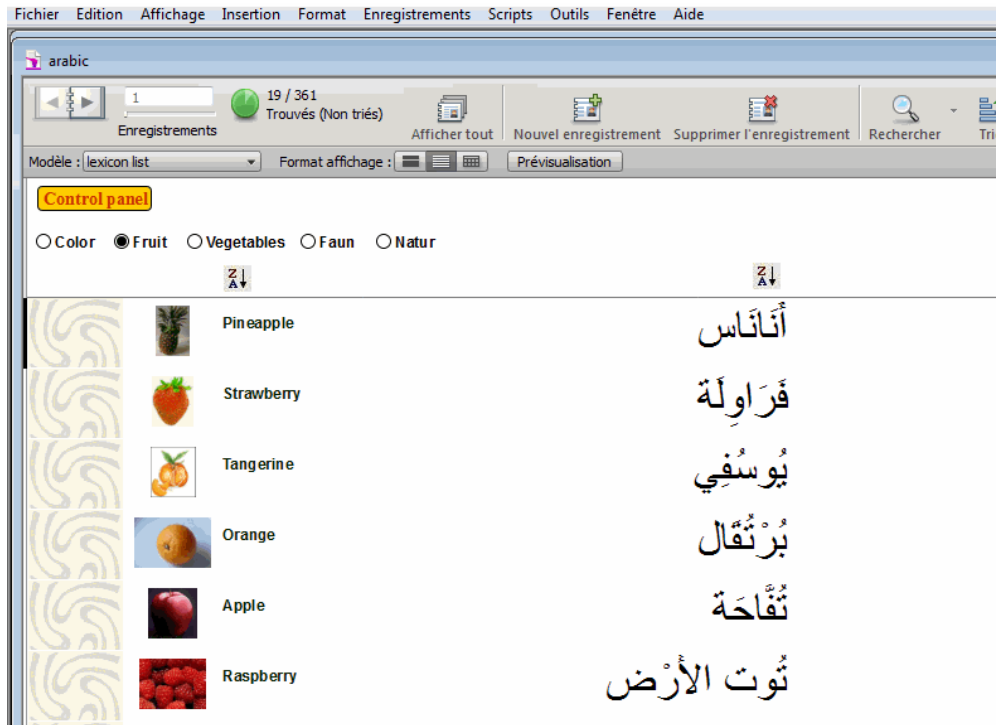


## Diacritics and Ligatures

FileMaker Pro et FileMaker Pro Advanced come with special settings to preserve ligatures and diacritics.

When exporting and saving databases in pdf format the diacritics will be properly placed over the consonants, both horizontally and vertically. The ligatures will be also correctly rendered.

See the example below:



Note: for better results, search your data without diacritics.